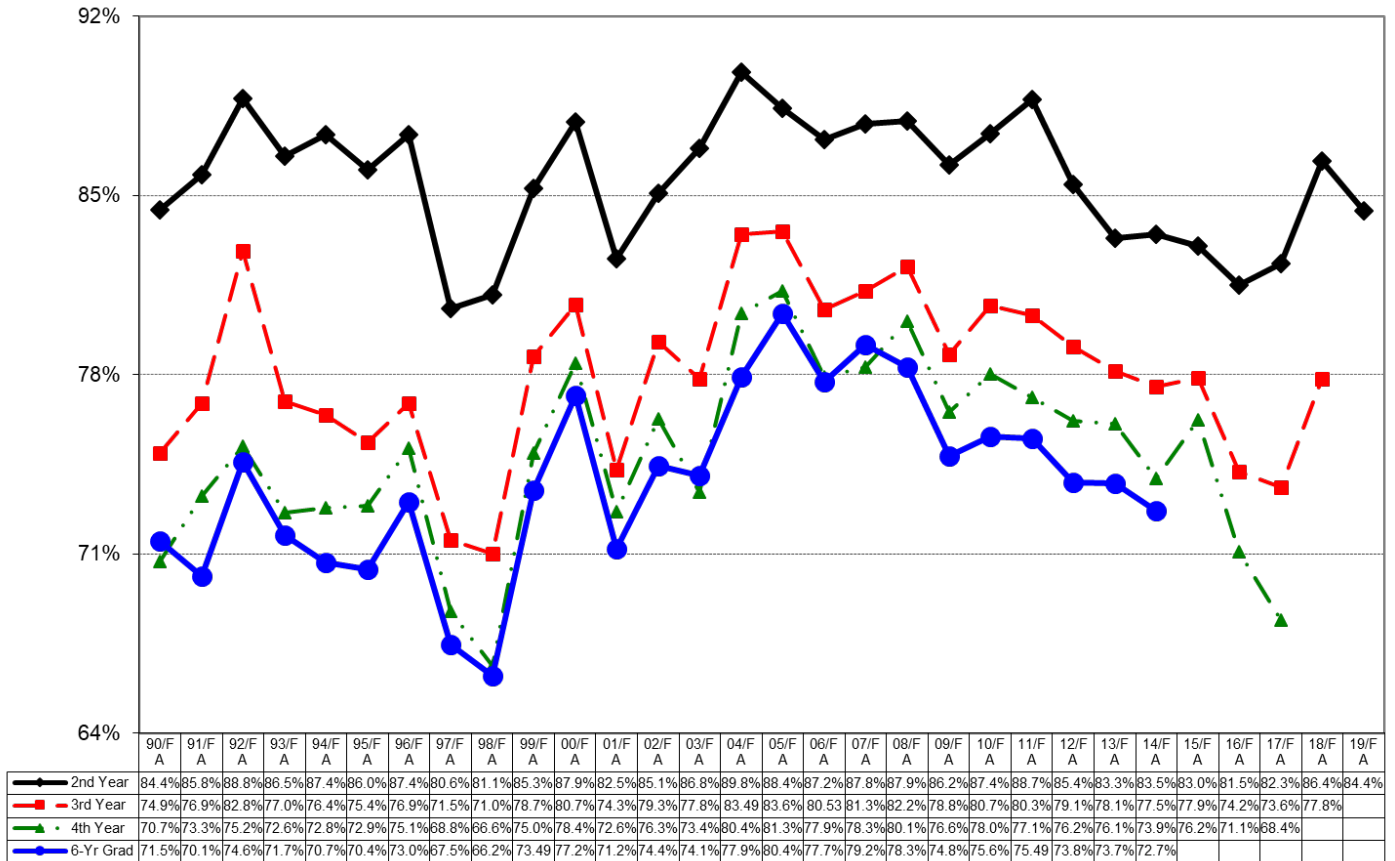


Allegheny's most recent first-to-second-year retention percentage of first-time, full-time, degree-seeking freshman is 84%. The most recent six-year graduation rate is 73%.

The chart below depicts Allegheny's historical retention and graduation percentages beginning with the cohort who entered in the fall 1990 semester. Included with the first-to-second year retention (in black) and the six-year graduation rate (in blue) are the first-to-third and first-to-fourth-year retention rates (in red and green respectively).

Since preparing students to enroll in another Title IV HEA-eligible institution is *not* part of Allegheny's mission, transfer-out rates are not calculated.

Fall-entry, First-year Student Retention and Graduation Rates



Six-Year Graduation Rates

Fall 2014 First-time, Full-time, Degree-seeking Freshman Cohort

		<i># Enrolled</i>	<i># Graduated</i>	<i>% Graduated</i>
Gender	Men	202	140	69.3%
	Women	270	203	75.2%
	<i>All</i>	<i>472</i>	<i>343</i>	<i>72.7%</i>

Self-identified Racial/Ethnic Group	Students of Color (including international students)	106	68	64.2%
	White/Unknown Students (non-Hispanic)	366	275	75.1%
	<i>All</i>	<i>472</i>	<i>343</i>	<i>72.7%</i>
	Asian/Pacific Isle	13	8	61.5%

Federal Financial Aid (first-year awards)	Pell Grant Recipients	140	88	62.9%
	Subsidized Stafford Loan Recipients who did not receive a Pell Grant	146	113	77.4%
	Students who did NOT receive a Pell Grant or a Subsidized Stafford Loan	186	142	76.3%
	<i>All</i>	<i>472</i>	<i>343</i>	<i>72.7%</i>